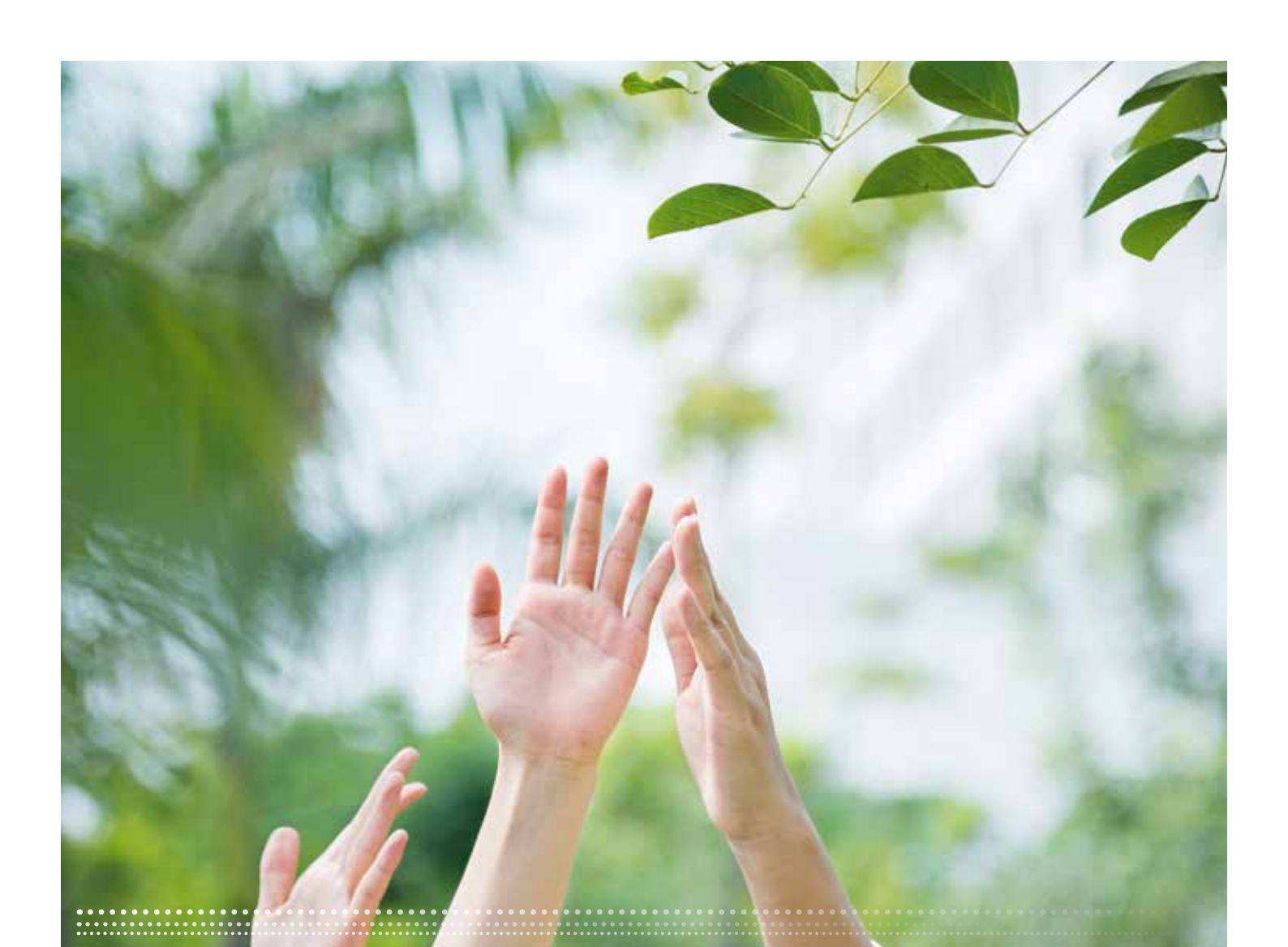


A new frontier, a new lifestyle.

SEKISUI



Contributing towards a better tomorrow
SEKISUI's commitment to the environment



Making a difference – the SEKISUI Environment Sustainability Vision 2030

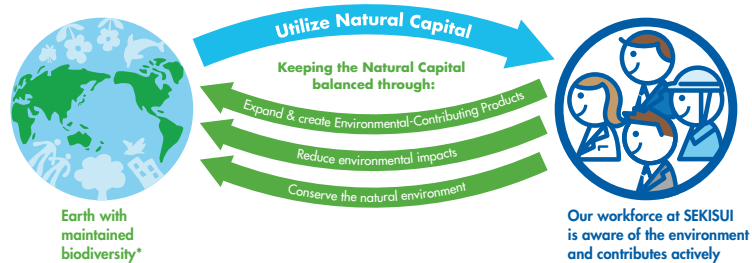
The environment is of major importance. Everyone knows that climate change and the increasing scarcity of natural resources are issues that need addressing. That's why we believe that each and every one of us must contribute to a better tomorrow. We have made the importance of acting responsibly and returning as much to nature as we take from it our main focus. As a consequence, we have developed the "SEKISUI Environment Sustainability Vision 2030" to steer our group towards sustainable and environmentally-aware management.

The SEKISUI Chemical Group and all its subsidiaries throughout the world want a planet on which the air, water and land provide a healthy living environment for its inhabitants. Our daily lives and economic activities are sustained by natural resources and we regard these as our Natural Capital. To be more specific: our Natural Capital is based on the resources we consume to do business, e.g. petrol and timber as well as the fertile land on which we build our office buildings and plants. We are therefore continuously making concerted efforts to return as much of this Natural Capital to nature as we use. Please read on to find out how environmental management works at SEKISUI.

Our Environmental Vision: to balance Natural Capital

The graphic below outlines the three main activities that form the core of our Environmental Sustainability Vision 2030. While we utilise Natural Capital from our planet, it is essential that we return as much to our planet as possible. Our main focus is guided by these ideas:

- Expand and create Environment-Contributing Products
- Reduce environmental impact, including conservation of energy and other resources
- Conserve the natural environment



* To us, biodiversity means that we create various solutions for issues like climate change, depletion of natural resources, deterioration of our ecosystem, etc. Our business operations should sustain the biodiversity of our planet.

Measuring environmental efforts with scientific instruments

Following our Environmental Vision, we began using the “SEKISUI Environment Sustainability Index” in 2014 as an integrated indicator to reflect our use of Natural Capital and our positive impact. To determine the index and in order to manage and control our efforts, the relevant (internal) data is entered into a customised state-of-the-art software using the LIME2 methodology, one of the most advanced methods available for the assessment of environmental impacts.

The SEKISUI Environmental Sustainability Index

The calculation of the SEKISUI Environmental Sustainability Index comprises three steps.

Step 1 Map and collect quantitative data (of environmental impacts and environmental activities)

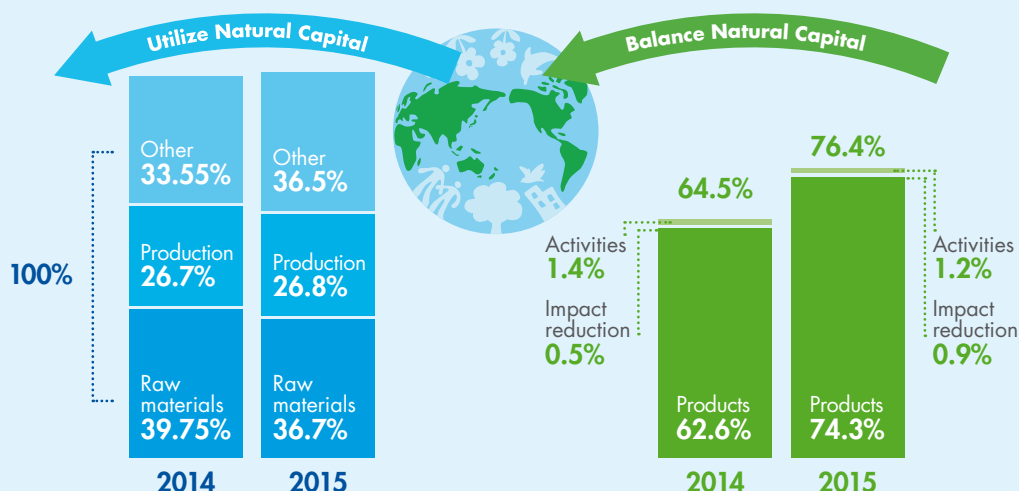
Environmental impact and environmental activities

- Raw material usage
- Water used
- GHG emissions
- Emissions of chemical substances
- Volume of waste generated
- Area of land used
- Positive impact of environmentally-efficient products
- Employee participation rate in activities to preserve the natural environment

Step 2 Determine environmental impacts and contributions

Step 3 Calculate the economic/monetary value for the use of Natural Capital and our positive impact

Developments over the last two years:



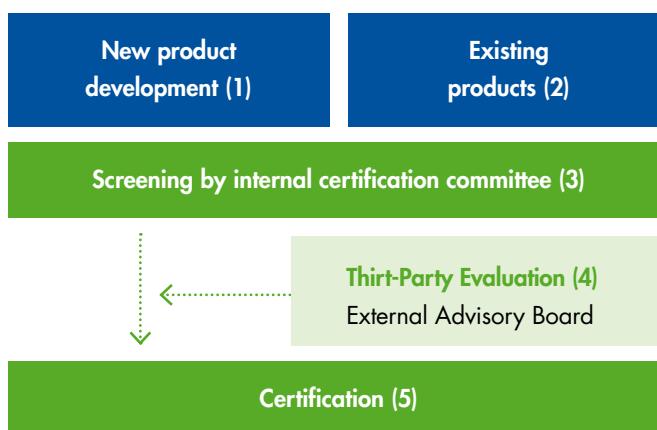
We are working on products that are as environmentally-efficient as possible

The fact that we achieved a 62.6% significant positive impact on the Natural Capital balance with our products made us think that there was potential for more. We therefore introduced our Sustainability Index to make our products even more environmentally-friendly and enable our customers to choose products that are more sustainable than those supplied by our competitors.

Our internal certification system for Environment-Contributing Products helps us estimate which products are making a significant contribution to the environment based on the environmental impact assessment. To increase the credibility, reliability and the transparency of the certification system we have founded an External Advisory Board, with members from third-party organizations. Those experts help us to consider a product's level of environmental contribution.

Understanding the certification process

The certification process is applied to existing and new SEKISUI products and is based on an internal analysis (1, 2). The complete value chain of our products, from raw material extraction and processing to the assembly and utilization, is analyzed and compared to competitive solutions in the same business area. This analysis is conducted by an internal certification committee (3).



We differentiate the term “Environment-Contributing” into five categories: Reduction of greenhouse-gas emissions, waste reduction, conservation of raw materials, water conservation as well as indispensable materials for products that contribute to the environment. In most cases our Environment-Contributing Products provide benefits in more than one of those categories.

The external advisory board (4) assesses the study, offers recommendations for further improvements and, if the study is successful, certifies (5) the product as being Environment-Contributing.



Caring for the environment is a core aspect of management for the SEKISUI Chemical Group. We believe that the forefront of growth for our group lies in the innovation and creation of new Environment-Contributing Products.

Jeiji Koze

President and Representative Director,
SEKISUI CHEMICAL CO., LTD.



Environment-Contributing Products – for your peace of mind

We keep increasing the numbers of environmentally-certified products

Our Environment-Contributing Products cover a broad range of fields, including housing, construction and infrastructure, IT and transportation, including automotive and mass transit. Currently, 109 products and services have been certified as Environment-Contributing Products. Below you'll find a list of the currently offered products in Europe and their environmental contribution.



Transportation	S-LEC™ Sound and Solar Film	S-LEC™ Solar Control Film	S-LEC™ Sound Acoustic Film	Advancell® EM Hollow microspheres
KYDEX® 6565 Thermoplastic sheets for aviation	FFU® Synthetic railway sleepers	Alveolen® Foamed airducts	Calmmoon Rail web noise shielding	
Construction & Infrastructure	SPR™ Trenchless pipe rehabilitation	Eslon Rain gutter systems	Ashera wood Artificial lumber	Crosswave Rainwater storage system
Electronics	Micropearl® AU Conductive micro-particles	Micropearl® SP/GS Conductive micro-particles	Medical Diagnostics	CP3000 Blood coagulation analyzer
Raw Materials	Advazol® Water soluble film			

Reduction of GHGs

Waste reduction

Conservation of raw materials (use of recycled materials, reduced use)

Semi-finished intermediate material that contributes to the environment

Water conservation/circulation

Disaster prevention and mitigation

Products that make life worth living

It's no exaggeration to say that the changing environment will have a profound effect on our society and our way of life. In Europe, SEKISUI's Environment-Contributing Products cover areas such as energy, resource consumption and ecological conservation. Our products are aimed at improving peoples' lives whilst being gentle to our planet – for a better society.

For a society with a global mindset

In accordance with the globalization of the world economy, travel by aircraft is expected to increase. An airplane's fuel consumption varies according to its weight. We are working on lightweight aircraft interiors to conserve energy.

KYDEX® 6565 – lightweight and comfortable seating

The frames of aircraft seats have traditionally used metals and metal composite materials to ensure strength and safety. Thermoplastic sheets like KYDEX® 6565 offer a compelling alternative, with a reduction of CO₂ emissions by 800,000 tonnes since 2009.



For a society with vibrant local communities

Trains are an environmentally-friendly way of transport and commuting. While the society enjoys an expanding train network, challenges come with the maintenance of railways.

FFU® synthetic sleepers

A long-lasting railroad sleeper, excellent for railways linking local rural communities to city centers. Significantly better technical characteristics compared to wood sleepers also allow better optimisation of the cross section – a huge advantage, especially in the area of railway bridges.



For a society asking for mobility and noise protection

To reduce their carbon footprint, more and more companies transfer their freight traffic from road to rail. While this is a climate-friendly development and connected communities meet the mobility demands of society, residents and travellers suffer from increasing rail noise.

Calmoon Rail – soundproofing rail cover

The rail web noise shielding offers an effective and economically efficient technology with proven noise reduction by 3 db on average. Besides the contribution to the well-being of humans, Calmoon Rail is quickly distributed by hand and track maintenance tasks can be carried out without any restrictions. Due to its low weight, delivery is less energy intensive and results in fewer CO₂ emissions.





For a society that makes efficient use of its resources and energy

We contribute to the sustainability of society by providing products and technologies that make more efficient use of energy and resources.

S-LEC™ Solar Control Film – safety and thermal insulation at once

S-LEC™ Film protects windshields from shattering. The S-LEC™ Solar Control Film also provides thermal insulation, for keeping the inside of the vehicle cooler, which reduces the need for vehicle air-conditioning during summer. This contributes to lower fuel consumption for better energy saving. The film combines increase of comfort with better energy-efficiency.



For a society asking for mobility while reducing environmental impact

In the automobile industry, where weight-saving components are essential for the improvement of mileage, lightweight materials are very much in demand.

Alveolen® - lightweight material for the reduction of fuel consumption

Foam airducts are 75-90% lighter than conventional moulded parts. The excellent insulation reduces the energy consumption of the climate control system and the lower weight reduces the energy consumption of the motor. Easier mounting, prevention of condensation and elimination of rattling noises are further benefits of foam parts that enhance the quality and comfort of cars.



For a society that cares for each other

Health and advanced medical care is vital for a long and enjoyable life. With technologies and products in the medical diagnostic field, SEKISUI contributes to the well-being of people.

Coapresta Series – CP3000 automated coagulation analyzer

This device is used for blood analysis, which is critical for the diagnosis and detection of disease, monitoring drugs and other medical purposes.

The CP3000 allows for rapid analysis using a minimal amount of water, making it a friendly choice for the environment, patients and hospital staff alike.



SEKISUI Europe B.V., located in Roermond, the Netherlands, is the European headquarters of the SEKISUI Chemical Group, a Japanese conglomerate with more than 65 years of experience in the housing sector and polymer-based processing.

In Europe, SEKISUI consists of 10 companies with over 1,000 employees. The European group of companies offers outstanding plastics for industrial applications in the automotive, construction & infrastructure and electronic domains as well as high-quality medical diagnostics products.

Sustainability Awards we have earned as of 2015:

- Earned RobecoSAM Industry Leader, Gold Class sustainability rating
- Earned selection to Dow Jones Sustainability Indices (DJSI) Industry Leader, World, Asia Pacific
- Earned selection to FTSE4Good Index
- Earned selection to Ethibel PIONEER and Ethibel EXCELLENCE indices
- Earned selection to the Morningstar Socially Responsible Investment Index
- Ranked 56th in Nikkei NICES ranking system
- Ranked 64th in Toyo Keizai CSR Ranking



Environmental Awards we have earned as of 2015:

- Ranked 68th in Nikkei Environmental Management Ranking
- Earned selection to CDP Japan 500 Climate Disclosure Leadership Index (CDLI)



SEKISUI

SEKISUI Europe B.V.

Metaalweg 5

6045 JB Roermond

the Netherlands

P +49 (0) 211 36977 51

I www.sekisuichemical.com

E europe@sekisui.com